



Rochester Education Association

Welcome to RPS



EA President

Dan Kuhlman

What does it mean to belong to the Rochester Education Association?

Education Minnesota (EdMn)

National Education Association (NEA)

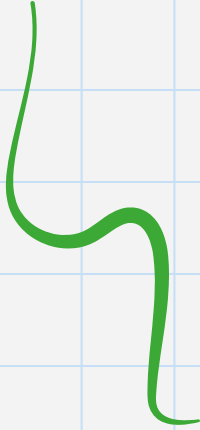
American Federation of Teachers (AFT)

AFL-CIO

Why join the REA?

Benefits like....

- Getting paid for New Teachers Workshop days
- Retirement benefits like the 403b match
- Full-time release President
- Representation at the table when district decisions are being made
- Being part of the national conversation about education
- Legal representation with Education Minnesota
- Free Professional development from EdMn, NEA, AFT
- Being part of the team

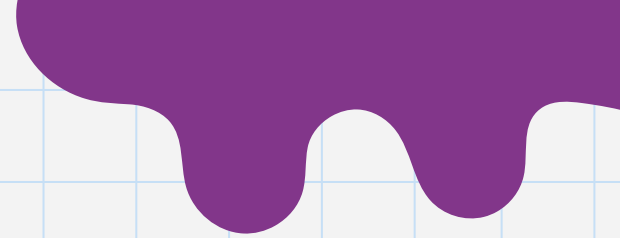


Why I joined the union...

Simon
Glaser

Natalia
Benjamin

Don
Nordine



Employees of Color ReSource Group



Rundah Arafat



Thang Nguyen



Reagan Kløver



Will Ruffin II



Ramona Norwood

Shavana Talbert



Malachi Johnson



Patrick Manansala



Ian Naatz



Natalia Benjamin

**Employees of Color Resource Group
Executive Board Members**



Employees of Color Resource Group

- **Highlight** Employees of Color who are doing great work around the district, as we know their efforts are often overlooked and undervalued
- Solicit **feedback** and house concerns from Staff of Color at both the building and district level
- Hold regular meetings with members to build a **community** of friendship, **mentorship** and **support**
- Provide opportunities for specific professional development for members
- Serve as a legitimate **advisory council** for district equity initiatives and general efforts in need of more diverse representation including, but not limited to, **curriculum writing**, staff **interview committee** rotations, Midwest and Plains (MAP) Equity Assistance Center partnerships, and educator **professional development** planning centered around **equity** and closing opportunity gaps for **Black, Indigenous, and other Students of Color**

Members Only Benefits

National Services (partial listing)

- Liability Insurance Coverage
- Employment Related Legal Services
- *NEA Today & Today's Education or Almanac of Higher Education*
- DUES-TAB No Cost Insurance
- Attorney Referral Programs
- Term Life and AD&D Insurance
- Money Market Programs
- Credit Card Programs
- Magazine Programs
- Credit Plans

Education Minnesota Services (partial listing)

- Field Staff Assistance
- *Minnesota Educator*
- Auto/Homeowners Insurance
- Financial Services/Preretirement Planning
- Auto Buying/Auto Leasing
- Travel
- Hotel/Motel Programs
- Flex Plans (I.R.C. Sec. 125)
- Long Term Care
- Admission to Minnesota Educators Academy (MEA)

Dues Structure

% Employed	National	State	Local	Total
Teach greater than 90% to 100%	251.16	500.00	178.00	929.16
Teach greater than 75% to 90%	251.16	453.70	160.20	865.06
Teach greater than 65% to 75%	251.16	384.25	133.50	768.91
Teach greater than 50% to 65%	251.16	337.95	115.70	704.81
Teach greater than 40% to 50%	133.68	268.50	89.00	491.18
Teach greater than 25% to 40%	133.68	222.20	71.20	427.08
Teach .25 or less and earning \$5,879 and over annually	74.94	152.75	44.50	272.19
Teach .25 or less and earning under \$5,879 annually	74.94	52.00	35.60	162.54



Join the REA
today

<https://educationminnesota.org/member-benefits/join-us/New-member/Apply>



Education Minnesota

EFS/ESI EdMn

Tony Schutte: tonyschutte@efsadvisors.com

Brady Husbyn: bradyh@efsadvisors.com

What's next?

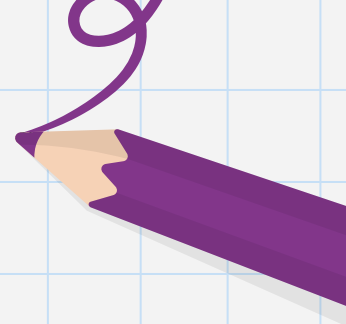
After confirming membership:

Everyone will receive a packet with more information.

Everyone will also receive a REA t-shirt (we will contact you regarding sizes).

Updates and Information from your building reps.

******We will have a drawing with the names of those that sign up today. Watch your email, you could be the winner.******



More Questions?

Check out the REA website: reamn.com

Email any of the Executive Board Members:

REA President: dakuhlman@edmn.org

REA V-P: emlynch@rochester.k12.mn.us

Membership Chair: dadevine@rochester.k12.mn.us

REA Secretary: casparks@rochester.k12.mn.us

